

# Construction Safety Performance Data Management Process

# Overview

---

- Needed database management tool to collect and report data to monitor construction project performance
- Selected Primavera (Expedition), a web-based tool to enable the project team to manage all aspects of the project:
  - Safety data collection / reporting
  - Project communication (meeting minutes, daily reports, punch list items)
  - Project tracking and construction schedule
  - Single point data repository – one database
  - Just-in-time reporting – current data

## Common Requirements

---

- Multi-user and multi-project construction management tool
- Metrics consistent with Construction Industry Institute (CII) benchmarking initiative
- Integrate with existing Company Project Management Process (PMP) and Project Planning Process (PPP) – {plan, execute, feedback}
- Ability to handle large-scale projects
- Capable of interacting with contractors/suppliers outside of Company firewall
- Single software for all projects - flexible

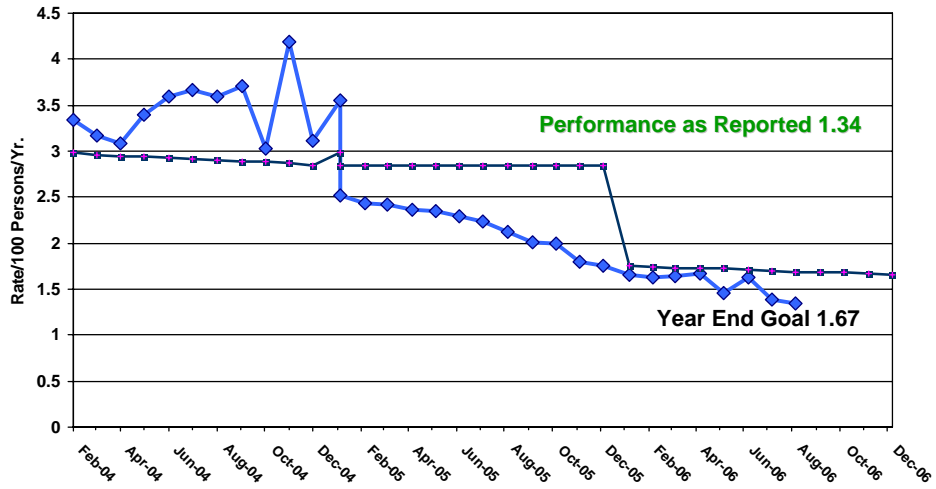
## Process

---

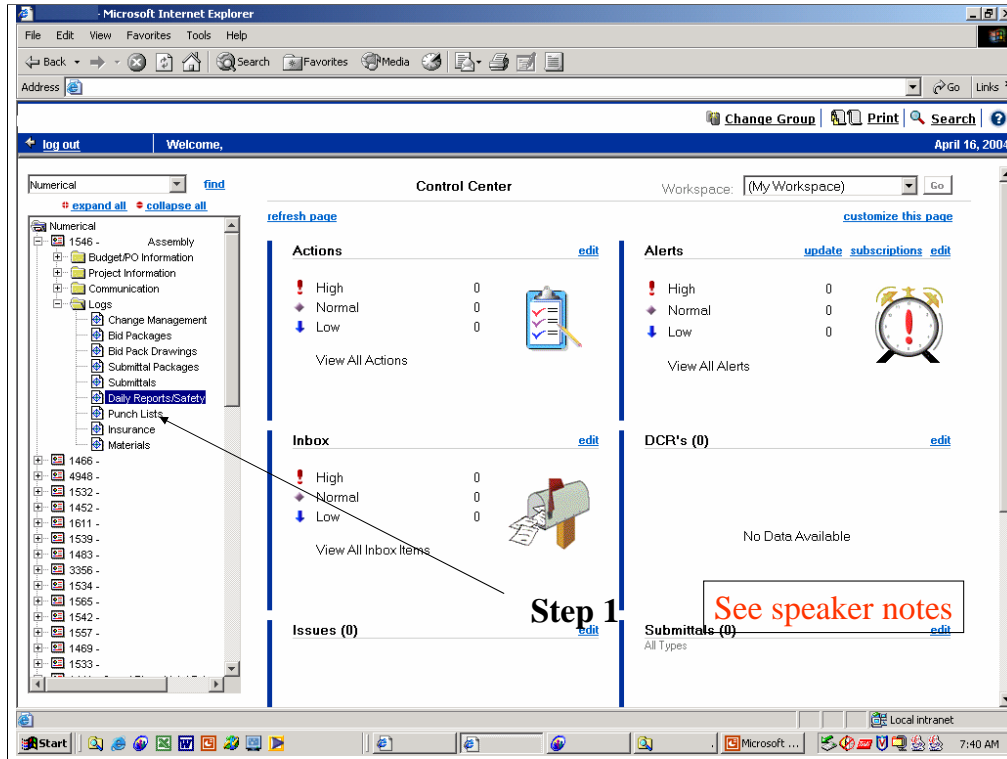
- Each project is assigned a unique project number
- Contractor is responsible for updating the database by the 10<sup>th</sup> day of each month:
  - Hours-worked; Fatalities; Lost workday cases; Days Away, Restricted, Transferred cases; OSHA-Recordable (other than listed above)
- All subcontractor data is rolled into prime contractor data
- Data is compiled centrally and reports are provided to Company leadership on a monthly basis
- Safety data is used as a key element for selecting contractors to perform new work for Company

Document controller typically provides support and/or oversight for data entry into Expedition

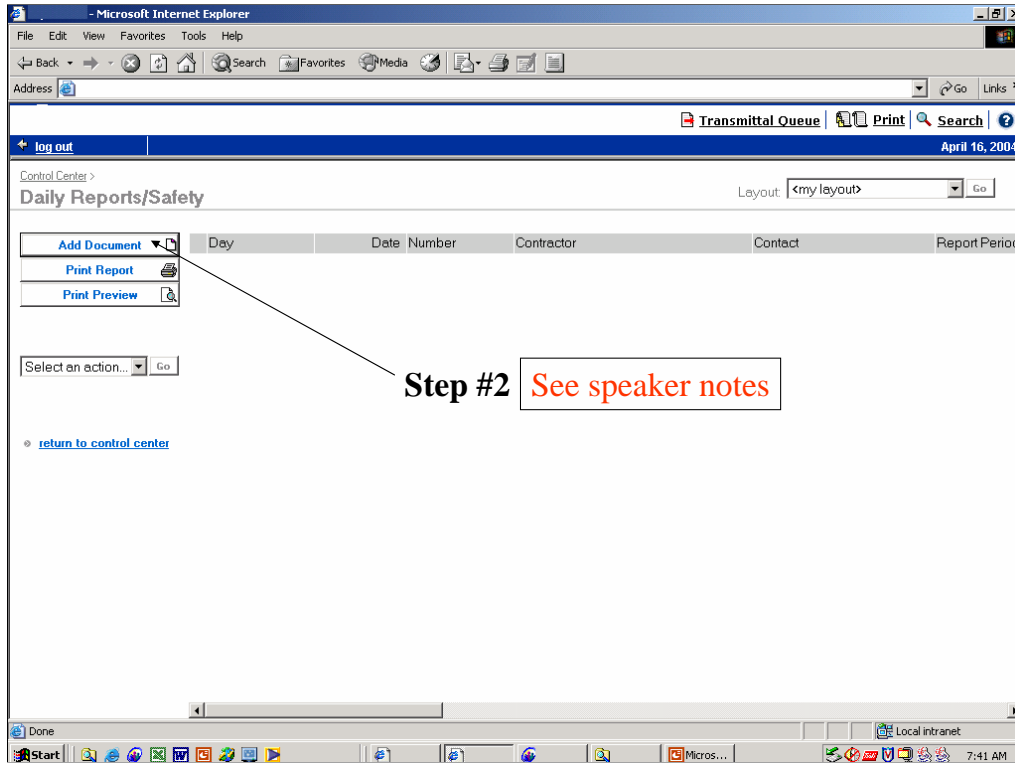
### Total Recordable R-IR (12-Month Rolling Average) August 2006



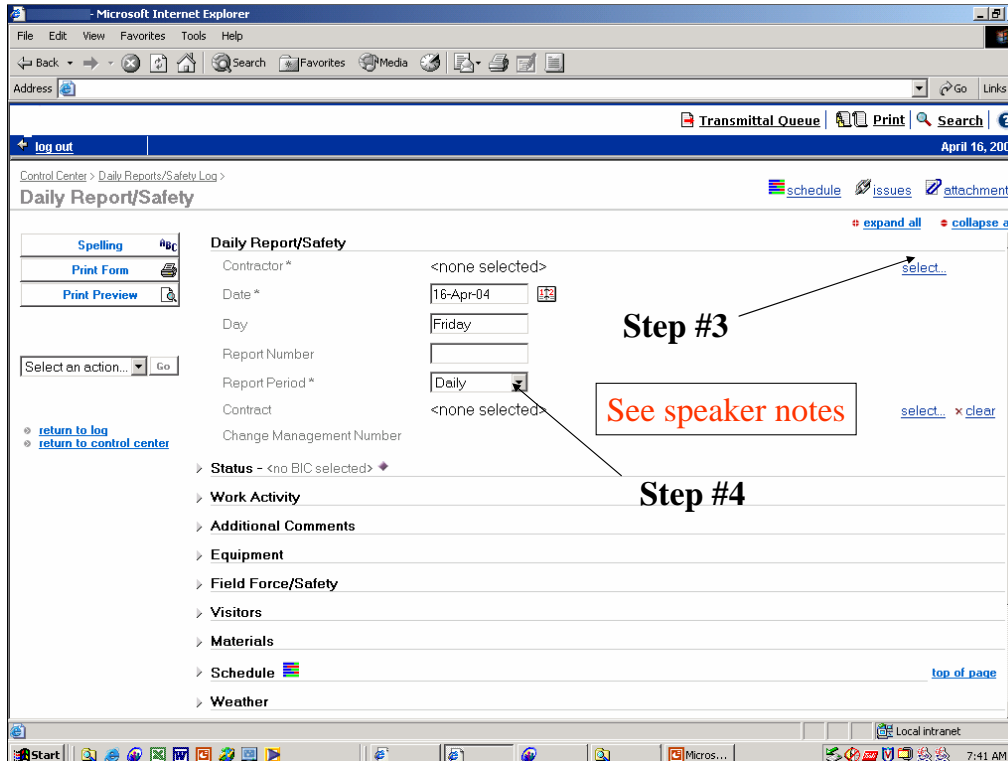
Back-up



Step 1: Login to Software and SELECT your project from the "Project Tree"  
Navigate in the "Project Tree" to Logs / Daily Reports

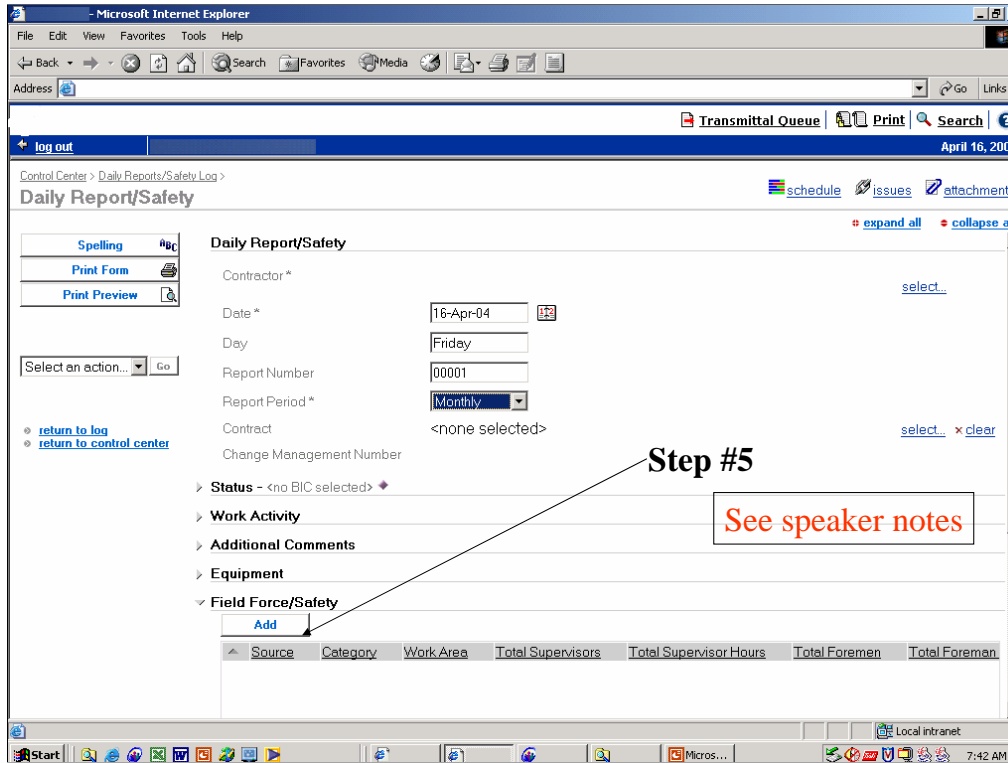


Step 2:        SELECT the “ADD DOCUMENT” button

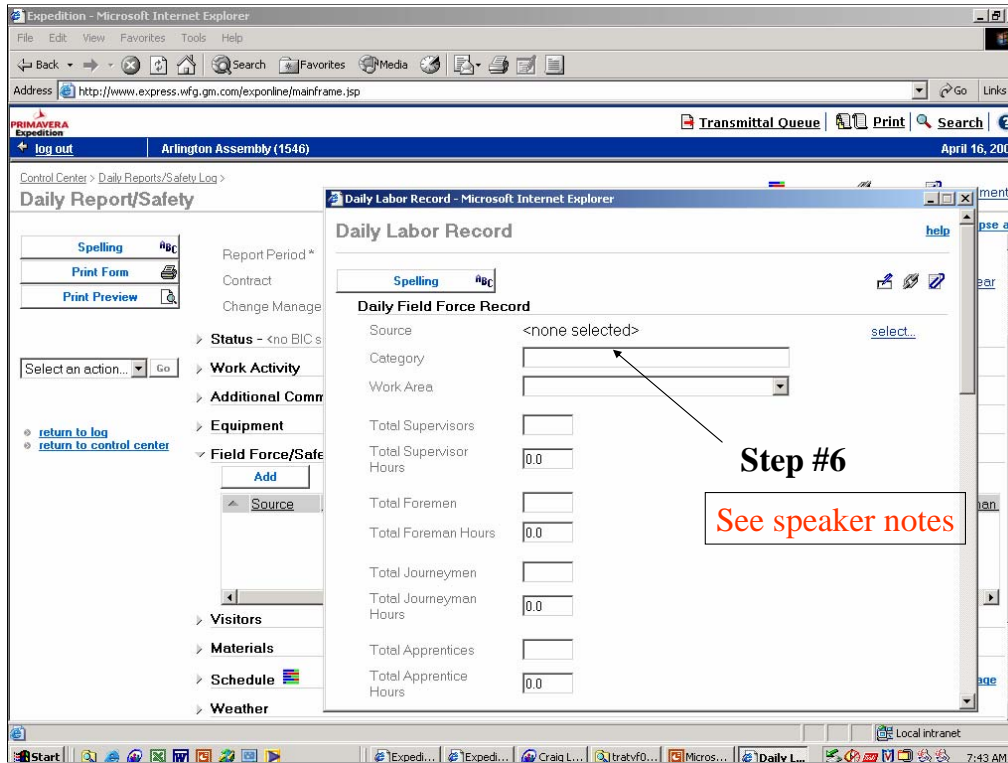


Step 3: SELECT a Contractor and MONTHLY from the “pull-down”

Step 4: Expand the Field Force / Safety “twisty”



Step 5: SELECT the “ADD” button on the Field Force / Safety “twisty”



Step 6: Fill in your Daily Labor Record information (if you want to track this information)

Change Number <none selected> [select..](#)

Remarks

▼ Custom Fields [top of page](#)

Monthly Hours  [select..](#) [x clear](#)

Death Case  [select..](#) [x clear](#)

Day Away Case  [select..](#) [x clear](#)

Restricted or Transferred Case  [select..](#) [x clear](#)

Other Recordable Case  [select..](#) [x clear](#)

Serious Near Miss  [select..](#) [x clear](#)

Program Level  [select..](#) [x clear](#)

Division  [select..](#) [x clear](#)

▼ Issues [top of page](#)

**Step #7**  
See speaker notes

Step 7: Fill in the “Custom Fields” data - (These are the REQUIRED Safety fields)

Project Name : 7220

New Facility

Report Span : 3/1/2005 To 2/28/2006

Print Date : 3/28/2006

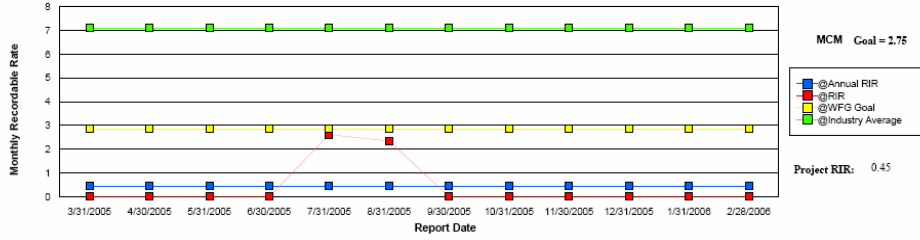
Project Number: MCM

Business Unit : WFC

Center of Service : Capital Projects

### Recordable Rate

Industry Average = 7.1  
WFG Goal = 2.85



Month	Hours Worked	Incidents
March	105,635	0
April	100,546	0
May	93,884	0
June	91,424	0
July	76,607	1
August	85,429	1
September	73,900	0
October	68,314	0
November	62,291	0
December	55,941	0
January	42,826	0
February	27,466	0

Data is automatically populated to generate standardized reports